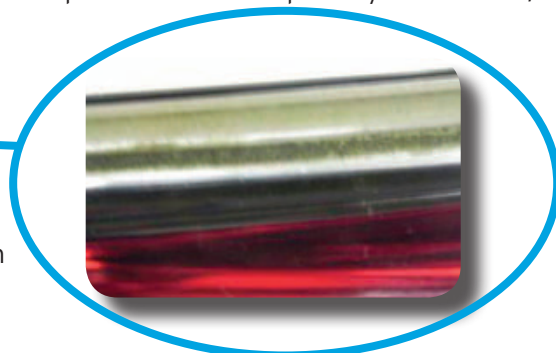
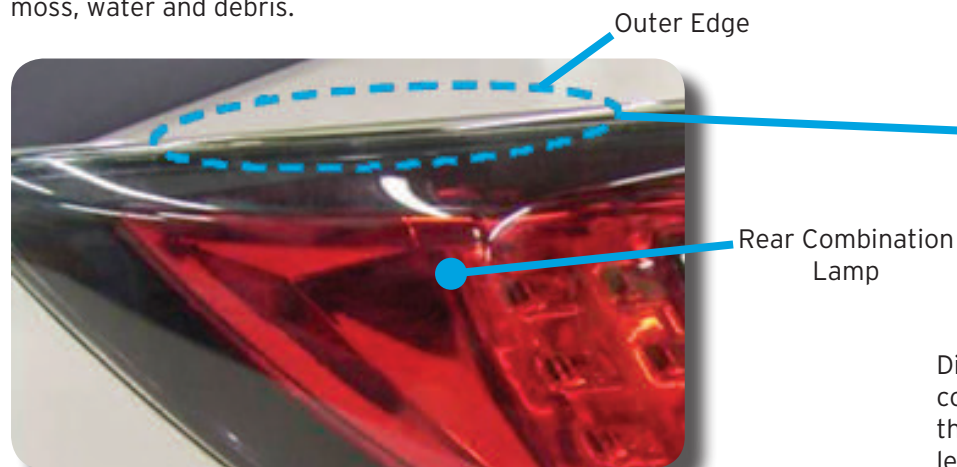


MULTI-MODEL REAR COMBINATION LAMP/FINISHER POOR APPEARANCE

Some customers may complain about the poor appearance of the rear combination lamp and/or finisher. This may be caused by normal environmental conditions, such as dirt, moss, foreign particle adhesion, and/or water to the back side of the outer edge. Part replacement will not correct this concern. Refer below for the procedures to temporarily remove dirt/moss, water and debris.

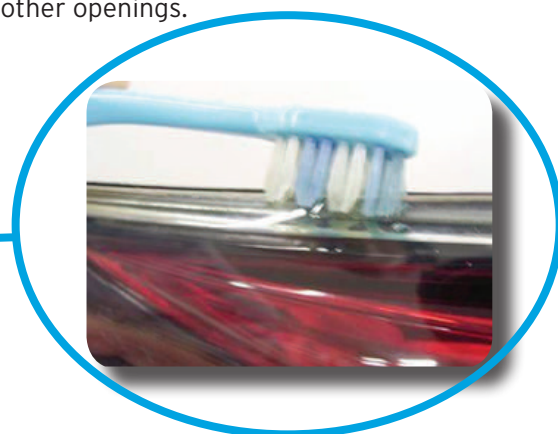
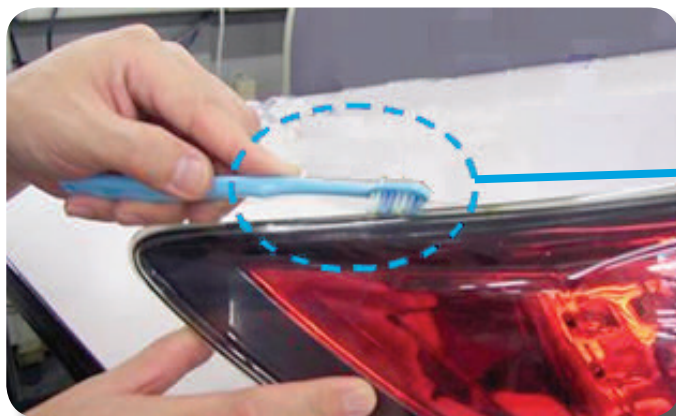


Dirt/moss can stick to the back side of the combination lamp outer edge (not inside the lamp) and can be seen through the lens, causing poor appearance.

Dirt/Moss Removal

This is a normal condition. Remove dirt/moss using a soft tooth brush soaked in water. Brush out the dirt/moss between the back side of the rear combination lamp and outer edge of the vehicle body.

- Use water only. Do not use car soap or other detergents.
- Do not allow water to enter the lamp internally through breathing cap or other openings.



Caution:
Brush out with care. Brushing too hard may damage the lamp or body.

Water Removal

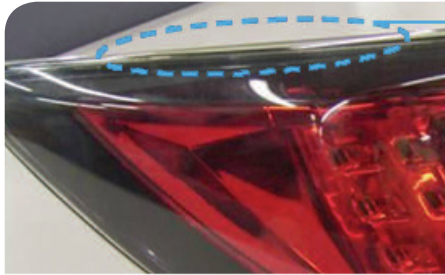
Blow compressed air along edge as shown:



Note: This is a temporary measure. Water drops will appear again under certain environmental conditions.

Foreign Particle Removal

1. Use a plastic card as a spatula to fit into the back side of the outer edge.



2. Use the spatula and, at the same time, pour water to scrape out the foreign particles.

Note: Do not use high-pressure water.

Caution: Scraping too hard may damage the lamp or body.

3. Remove the water using compressed air.

